



BEST INJECTION
HIGH PURIFICATION
BEST CARRIER
BEST STAINING
SAFER

A large, realistic-looking blue water droplet is the central focus of the right side of the image. It is positioned over a light blue background with a subtle grid pattern. The text from the previous block is overlaid on the droplet in a semi-transparent, light blue font. A small red plus sign is located to the right of the bottom of the droplet.

PURE PERFORMANCE.
FOCUS ON ILM-BLUE® AND
MEMBRANEBLUE-DUAL®

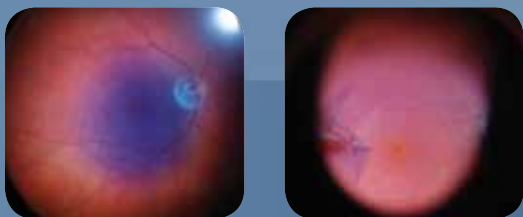
ILM-BLUE®



ILM.05S ILM-Blue®, 0.5ml Syringe (Sterile, box/5)

- ILM-Blue® is a dye to stain the ILM in vitreoretinal surgery.
- By injecting ILM-Blue® in the vitreous cavity the ILM will be clearly stained and easily distinguished from the underlying, unstained retina and can be removed selectively.
- Due to a new integrated carrier 4% PEG solution, ILM-Blue® can be injected in a BSS filled eye and sinks immediately as a cohesive ball to the fundus of the eye and only stains the targeted tissue without diffusion throughout the whole globe.

BEST ILM STAINING DUE TO HIGH PURIFICATION UP TO 97% PURITY



ILM-Blue®

ILM-BLUE®: Posterior Dye for staining the ILM consists of:

- BBG 0,025% + 4% PEG
- Highly purified BBG up to 97% purity!

PURE PERFORMANCE FOCUS ON ILM MEMBRANEBLUE

- NEW GENERATION
- NEW CARRIER FOR BEST INJECTION
- ILM-BLUE® FOR SELECTIVE
- MEMBRANEBLUE-DUAL® FOR THICK
- HIGHLY PURIFICATION
- READY TO USE

BEST INJECTION CHARACTERISTICS DUE TO NEW "CARRIER" 4% PEG SOLUTION



SPECIFICATIONS ILM-BLUE®

Composition of one 0.5ml syringe

- 0.125 mg Brilliant Blue G
- PEG · 4% PEG 3350
- Density kg/l · 1,01

Concentration: 0.25 g/l
pH-value: 7.3 - 7.6
Osmolality: 334 mOsm/kg H₂O

PURITY & SAFETY

- ILM-Blue® & MembraneBlue-Dual® are produced according to Current Good Manufacturing Practice (CGMP)
- ILM-Blue® & MembraneBlue-Dual® are produced with highly purified BBG + Trypanblue at a drug substance level.

PATENT PROTECTED

USA 6,696,430B1
6,372,449
20080090914A1
Australia 75731 8
Japan 4200222
Europe EP 1 819 366 B1



Technology
Licensed from
AQUMEN, Japan

PERFORMANCE. ILM-BLUE® AND MEMBRANEBLUE-DUAL®

- POSTERIOR DYES •
- INJECTION CHARACTERISTICS •
- SELECTIVE ILM STAINING •
- THE BEST ILM AND ERM STAINING •
- FOR PATIENT SAFETY •
- AVAILABLE IN SYRINGES •

Creates better injection characteristics under BSS. Sinks immediately to posterior pole as a cohesive ball. Stains only target tissue and no diffusion throughout the eye.



SPECIFICATIONS MEMBRANEBLUE-DUAL®

Composition of one 0.5ml syringe

- 0.125 mg Brilliant Blue G
- 0.75 mg Trypan Blue
- PEG 4% PEG 3350
- Density kg/l 1,01

Concentration: 1.75 g/l
pH-value: 7.3 - 7.6
Osmolality: 338 mOsm/kg H2O

SAFETY TESTS

Toxicity tests on ARPE-19 human retinal pigment epithelium cells showed an advantageous safety profile of the new products MembraneBlue-Dual® and ILM-Blue®.

Increased purity of the dyes as well as the addition of PEG3350 results in even safer products.

Safety testing was complemented by electron microscopy ultrastructural analysis and *in vitro* cytotoxicity tests according to ISO-10993.

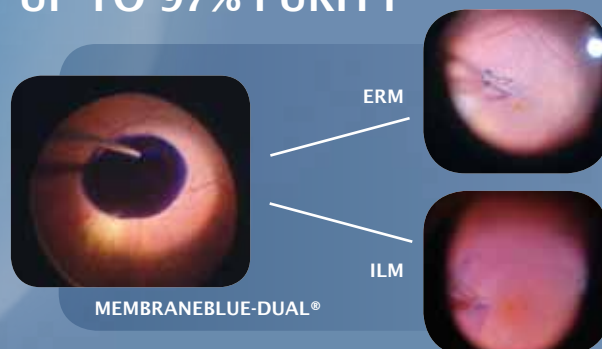
MEMBRANEBLUE-DUAL®



MBD.05S MembraneBlue-Dual® 0.5 ml Syringe (Sterile, box/5)

- MembraneBlue-Dual® is a dye to stain both the ILM as well as the ERM and PVR membrane, without compromising the staining effect within one injection.
- By injecting MembraneBlue-Dual® in the vitreous cavity the membrane will be clearly stained and easily distinguished from the underlying, unstained retina and can be removed selectively.
- Extensive tests proved that MembraneBlue-Dual® is a 100% stable mix and stains the ILM at the same level as ILM-Blue® and stains the ERM and PVR at a higher level than the classic MembraneBlue.
- Due to a new integrated carrier 4% PEG solution, MembraneBlue-Dual® can be injected in a BSS filled eye and sinks immediately as a cohesive ball to the fundus of the eye and only stains the targeted tissue without diffusion throughout the whole globe.

BEST ILM & ERM STAINING DUE TO HIGH PURIFICATION UP TO 97% PURITY



MEMBRANEBLUE-DUAL®: Dye for staining ILM, ERM & PVR membranes consists of:

- Combination of TrypanBlue 0,15% + BBG 0,025% + 4% PEG
- Highly purified TB + BBG up to 97%

FOCUS ON KNOWLEDGE

FOCUS ON DESIGN



For additional information please contact: **D.O.R.C. International B.V.**
Scheijdelweg 2, 3214 VN Zuidland
The Netherlands
Phone: +31 181 45 80 80
Fax: +31 181 45 80 90
E-mail: sales@dorc.nl

In Latin America please contact: **D.O.R.C. Latin America**
Scheijdelweg 2, 3214 VN Zuidland
The Netherlands
Phone: +31 181 45 80 80
Fax: +31 181 45 80 90
E-mail: la-sales@dorc.nl

In Middle East please contact: **D.O.R.C. Middle East, Africa and India**
PO BOX 212218, Dubai, United Arab Emirates
Phone: 00971 48857613
Fax: 00971 48857614
E-mail: cvds@dorc.nl

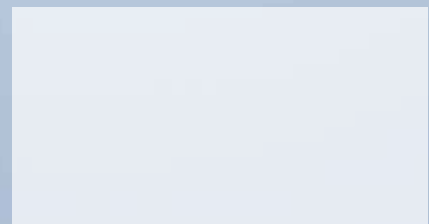
In Scandinavia please contact: **D.O.R.C. Scandinavia AB**
Bettorpsgatan 10, SE-701 11 Örebro
Sweden
Phone: +46 19121514
Fax: +46 19188204
E-mail: order@dorc.se

In France please contact: **D.O.R.C. France S.A.R.L.**
30, Boulevard Pasteur, 75015 Paris
France
Phone: +33 1 53 58 14 73
Fax: +33 1 53 58 14 75
E-mail: ventes@dorc.fr

In Germany please contact: **D.O.R.C. Deutschland GmbH**
Charlottenstraße 68
10117 Berlin
Deutschland
Phone: +49 30 201 88364
Fax: +49 30 201 88365
E-mail: bestellung@dorc.de



AUTHORIZED D.O.R.C. DEALER



CE
0344